



قائمة المنتجات PRODUCT LIST



**YOUR
COMPLETE
PROJECT NEEDS!**



منتجات الطاقة الشمسية
SOLAR POWER PRODUCTS



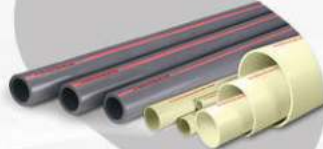
وصلات الصرف الصحي
DRAINAGE & SEWAGE SYSTEM



وصلات الضغط العالي
HIGH PRESSURE FITTINGS



الأنابيب الحرارية ومستلزماتها
PPR PIPES & FITTINGS



أنابيب UPVC, CPVC
UPVC, CPVC PIPES



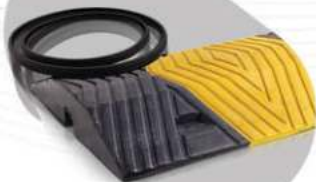
أنابيب وقطع البولي إيثيلين
PE PIPES & FITTINGS



أنابيب ووصلات فيبر جلاس
GRP PIPES & FITTINGS



خزانات الفيبر جلاس
FIBER GLASS TANKS



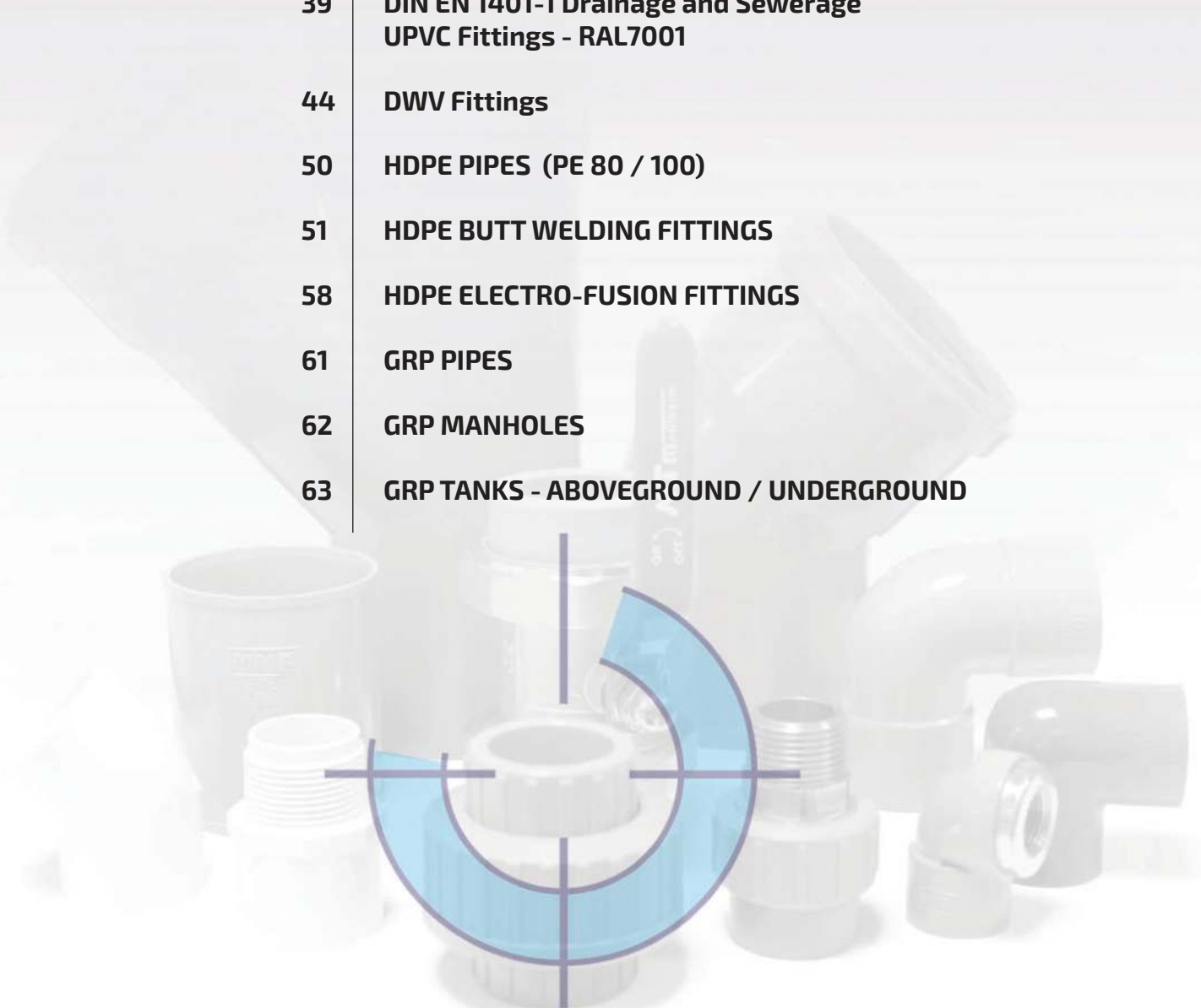
المنتجات المطاطية
RUBBER PRODUCTS



مُزَيَّات UPVC & CPVC
UPVC, CPVC COMPOUND

www.ALMUNIFPIPES.com

Page	CONTENTS
4	UPVC SCH-40 Pipes and Fittngs
7	UPVC SCH-80 Pipes and Fittings
11	CPVC Pipes & Fittings
15	PPR Pipes and Fittings
25	UPVC High Pressure Fittings
35	DIN EN 1401-1 Drainage and Sewerage UPVC Fittings - RAL8023
39	DIN EN 1401-1 Drainage and Sewerage UPVC Fittings - RAL7001
44	DWV Fittings
50	HDPE PIPES (PE 80 / 100)
51	HDPE BUTT WELDING FITTINGS
58	HDPE ELECTRO-FUSION FITTINGS
61	GRP PIPES
62	GRP MANHOLES
63	GRP TANKS - ABOVEGROUND / UNDERGROUND





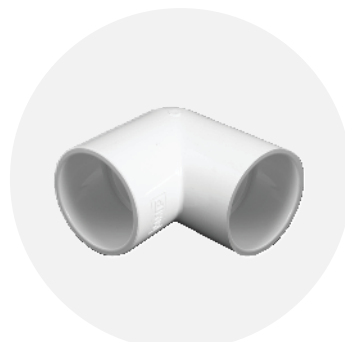
UPVC SCH-40 PIPES AND FITTINGS



UPVC Pipe Sch-40 مواسير

SIZE (mm)

1/2"
3/4"
1"
1 1/2"
1 1/4"
2"
2 1/2"
3"
4"
6"
8"



Elbow 90° كوع ٩٠

SIZE (in)

1/2"
3/4"
1"
1 1/2"
1 1/4"
2"
2 1/2"
3"
4"
6"
8"



Elbow 45° كوع ٤٥

SIZE (in)

1/2"
3/4"
1"
1 1/2"
1 1/4"
2"
2 1/2"
3"
4"
6"
8"



Tee 90° قسام

SIZE (in)

1/2"
3/4"
1"
1 1/2"
1 1/4"
2"
2 1/2"
3"
4"
6"
8"



Socket جلبة

SIZE (in)

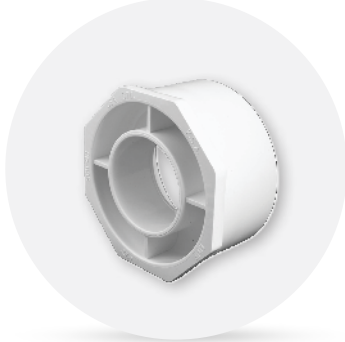
1/2"
3/4"
1"
1 1/2"
1 1/4"
2"
2 1/2"
3"
4"
6"
8"



End Cap سدة

SIZE (in)

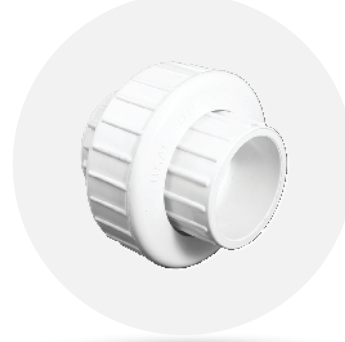
1/2"
3/4"
1"
1 1/4"
1 1/2"
2"
2 1/2"
3"
4"
6"



Reducer Bush M/F نقاص

SIZE (in)

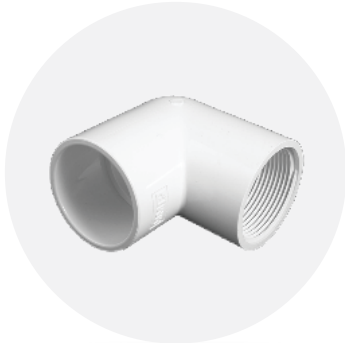
3/4 X 1/2
1 X 1/2
1 X 3/4
1 1/2 X 1/2
1 1/2 X 3/4
1 1/2 X 1
1 1/2 X 1 1/4
1 1/4 X 1/2
1 1/4 X 3/4
1 1/4 X 1
2 X 1/2
2 X 3/4
2 X 1
2 X 1 1/2
2 X 1 1/4
3 X 1
3 X 2
4 X 2
4 X 3
6 X 4
8 X 6



Union شد وصل

SIZE (in)

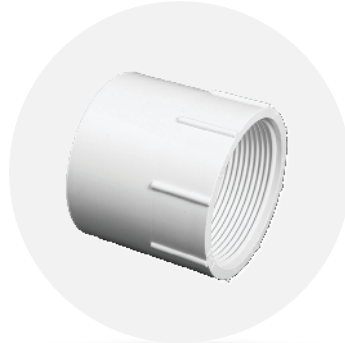
1/2"
3/4"
1"
1 1/2"
1 1/4"
2"



Elbow 90° كوع ٩٠
Female Threaded بسن داخلي

SIZE (in)

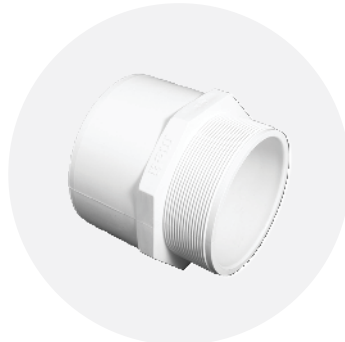
1/2"
3/4"
1"
1 1/2"
2"



Female Adapter جلبة
بسند داخلي

SIZE (in)

1/2"
3/4"
1"
1 1/2"
1 1/4"
2"
2 1/2"
3"
4"



Male Adapter جلبة
بسند خارجي

SIZE (in)

1/2"
3/4"
1"
1 1/2"
1 1/4"
2"
2 1/2"
3"
4"



P-Trap F/F كوع ريحة

SIZE (in)

4"



UPVC SCH-80 PIPES AND FITTINGS



UPVC Pipes

مواسير

SIZE (in)	LENGTH
1/2"	6m
3/4"	6m
1"	6m
1 1/2"	6m
1 1/4"	6m
2"	6m
2 1/2"	6m
3"	6m
4"	6m
6"	6m
8"	6m



Male Adapter

جلبة
بسّن خارجي

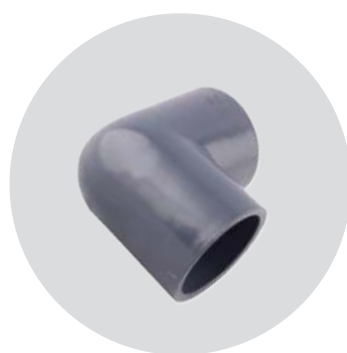
SIZE (in)
1/2"
3/4"
1"
1 1/2"
1 1/4"
2"
2 1/2"
3"
4"



Female Adapter

جلبة
بسّن داخلي

SIZE (in)
1/2"
3/4"
1"
1 1/2"
2"
2 1/2"



Elbow 90°

كوع ٩٠

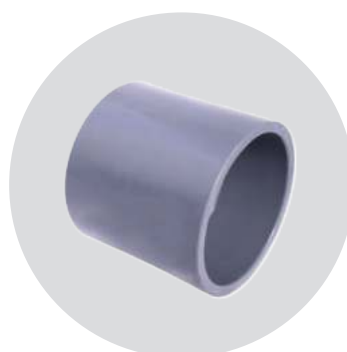
SIZE (in)
1/2"
3/4"
1"
1 1/2"
1 1/4"
2"
2 1/2"
3"
4"



Elbow 45°

كوع ٤٥

SIZE (in)
1/2"
3/4"
1"
1 1/2"
2"



Socket

جلبة

SIZE (in)
1/2"
3/4"
1"
1 1/2"
1 1/4"
2"
2 1/2"
3"
4"
6"
8"



Union

شد وصل

SIZE (in)
1/2"
3/4"
1"
1 1/2"
1 1/4"
2"
2 1/2"
3"
4"

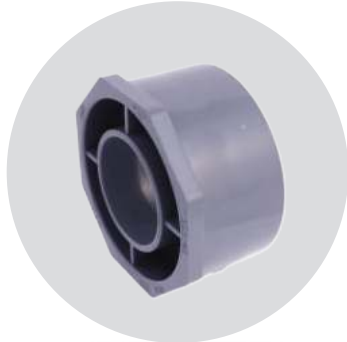


Elbow 90°

بسّن نحاس داخلي

كوع

SIZE (in)
1/2 x 1/2"
3/4 x 1/2"



Reducer Bush M/F نقص

SIZE (in)

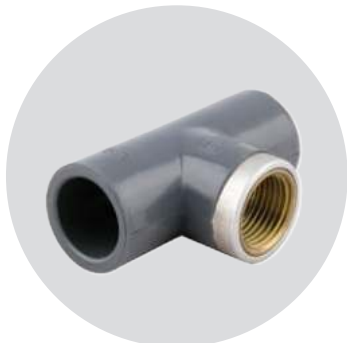
3/4 X 1/2
1 X 1/2
1 X 3/4
1 1/2 X 1/2
1 1/2 X 3/4
1 1/2 X 1
1 1/2 X 1 1/4
1 1/4 X 1/2
1 1/4 X 3/4
1 1/4 X 1
2 X 1/2
2 X 3/4
2 X 1
2 X 1 1/2
2 X 1 1/4
3 X 1
3 X 2
4 X 2
4 X 3



Tee 90° قسم

SIZE (in)

1/2"
3/4"
1"
1 1/2"
1 1/4"
2"
2 1/2"
3"
4"
6"
8"



Tee 90° قسم
Brass Female Threaded بسن نحاس داخلي

SIZE (in)

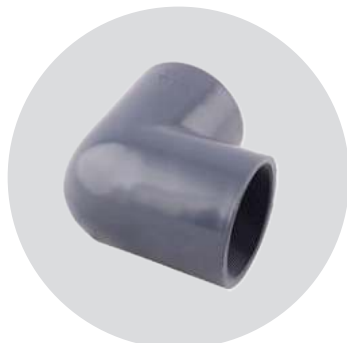
1/2 x 1/2"
3/4 x 1/2"



Male Adapter جلبة
Brass Threaded بسن نحاس خارجي

SIZE (in)

3/4"
1"
1 1/2"
1 1/4"
2"



Elbow 90° كوع ٩٠
Female Threaded بسن داخلي

SIZE (in)

1/2"
3/4"
1"
1 1/4"
1 1/2"
2"



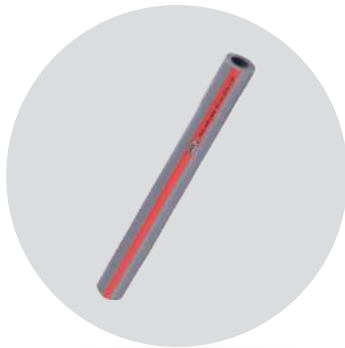
Cross Over كوع جمل

SIZE (mm)

1/2"
3/4"
1"



CPVC PIPES AND FITTINGS



Pipe

مواسير

SIZE (in)

1/2"
3/4"
1"
1 1/4"
1 1/2"
2"
2 1/2"
3"
4"
6"
8"



Elbow

كوع

Brass Female Threaded بسن نحاس داخلي

SIZE (in)

1/2 x 1/2"
3/4 x 1/2"



Female Adapter

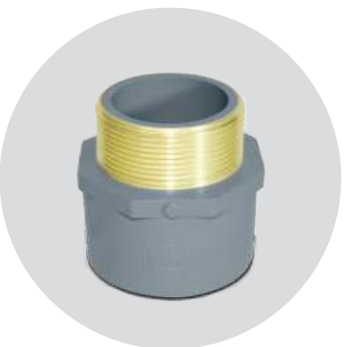
Brass Threaded

جلبة

بسن نحاس داخلي

SIZE (in)

1/2 x 1/2"
3/4 x 1/2"
-
-
3/4x3/4



Male Adapter

Brass Threaded

جلبة

بسن نحاس خارجي

SIZE (in)

1/2"
3/4"
1"
1 1/4"
1 1/2"
2"



Tee 90°

Brass Female Threaded بسن نحاس داخلي

قسام

SIZE (in)

1/2 x 1/2"
3/4 x 1/2"



Female Adapter

جلبة بسن داخلي

SIZE (in)

1/2"
3/4"
1"
1 1/4"
1 1/2"
2"
2 1/2"
3"
4"



Male Adapter

جلبة بسن خارجي

SIZE (in)

1/2"
3/4"
1"
1 1/4"
1 1/2"
2"
2 1/2"
3"
4"



Elbow 90°

كوع ٩٠

SIZE (in)

1/2"
3/4"
1"
1 1/4"
1 1/2"
2"
2 1/2"
3"
4"
6"
8"



Elbow 45°

كوع ٤٥

SIZE (in)

1/2"
3/4"
1"
1 1/4"
1 1/2"
2"
2 1/2"
3"
4"
6"
8"



Socket

جلبة

SIZE (in)

1/2"
3/4"
1"
1 1/4"
1 1/2"
2"
2 1/2"
3"
4"
6"
8"



Tee 90°

قسام

SIZE (in)

1/2"
3/4"
1"
1 1/4"
1 1/2"
2"
2 1/2"
3"
4"
6"
8"

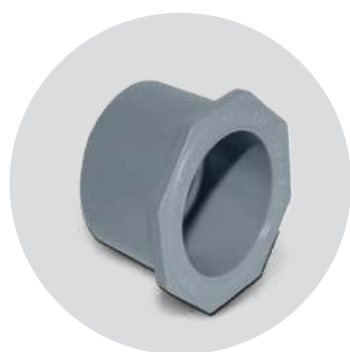


Union

شد وصل

SIZE (in)

1/2"
3/4"
1"
1 1/4"
1 1/2"
2"
2 1/2"
3"

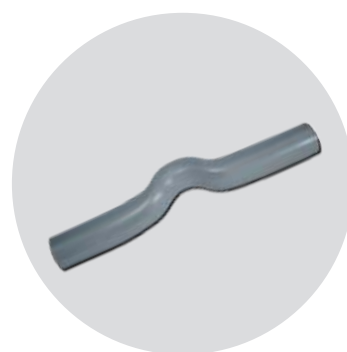


Reducer Bush

نقاص مبطن

SIZE (in)

3/4 x 1/2"
1 x 1/2"
1 x 3/4"
1 1/4 x 1/2"
1 1/4 x 3/4"
1 1/4 x 1"
1 1/2 x 1/2"
1 1/2 x 3/4"
1 1/2 x 1"
1 1/2 x 1 1/4"
2 x 1/2"
2 x 3/4"
2 x 1"
2 x 1 1/4"
2 x 1 1/2"
3 x 1"
3 x 2"



Cross Over

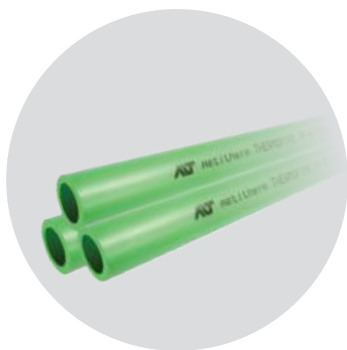
كوع جمل

SIZE (in)

1/2"
3/4"
1"



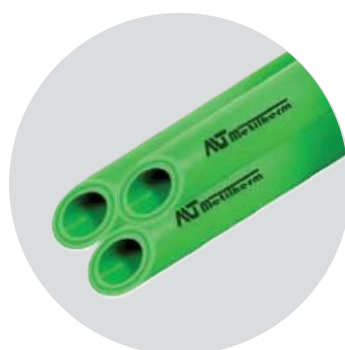
AV metitherm
PPR PIPES AND FITTINGS



PP-R PIPE PN20
مواسير

SIZE (mm)

20x3.4mm
25x4.2mm
32x5.4mm
40x6.7mm
50x8.4mm
63x10.5mm
75x12.5mm
90x15.0mm
110x18.4mm
125x20.8mm
160x26.6mm
20x3.4mm
25x4.2mm
32x5.4mm
40x6.7mm
50x8.4mm
63x10.5mm
75x12.5mm
90x15.0mm
110x18.4mm
125x20.8mm
160x26.6mm



PP-R FIBER COMPOSITE PIPE
مواسير الألياف المركبة

SIZE (mm)

20x3.4
25x4.2
32x5.4
40x6.7
50x8.3
63x10.5
75x12.5
90x15.0
110x18.3



PP-R FIBER COMPOSITE PIPE WITH UV
مواسير الألياف المركبة

SIZE (mm)

20x2.8
25x3.5
32x4.4
40x5.5
50x6.9
63x8.6
75x10.3
90x12.3
110x15.1



MALE ADAPTER BRASS THREADED PN25
جلبه بسن خارجي

SIZE (mm)

20 x 1/2"
20 x 3/4"
25 x 1/2"
25 x 3/4"
32 x 1/2"
32 x 3/4"
31 x 1"



**FEMALE ADAPTER
BRASS TREADED PN25**
جلبة بسن داخلي

SIZE (mm)

20 x 1/2"
20 x 3/4"
25 x 1/2"
25 x 3/4"
32 x 1/2"
32 x 3/4"



**ELBOW 90°MALE
THREADED PN25**
كوع بسن خارجي

SIZE (mm)

20 x 1/2"
20 x 3/4"
25 x 1/2"
25 x 3/4"
32 x 3/4"
32 x 1"



**ELBOW 90°FEMALE
THREADED PN25**
كوع بسن داخلي

SIZE (mm)

20 x 1/2"
20 x 3/4"
25 x 1/2"
25 x 3/4"
32 x 3/4"
32 x 1"



**TEE 90°FEMALE
THREADED PN25**
قسام بسن داخلي (سداسي)

SIZE (mm)

20 x 1/2"
20 x 3/4"
25 x 1/2"
25 x 3/4"
32 x 3/4"
32 x 1"



**ELBOW 90° FEMALE THREADED
WALL MOUNT PN 25**
كوع بسن داخلي (يثبت جداريا)

SIZE (mm)

20 x 1/2"

25 x 1/2"

32 x 1"



**MALE ADAPTER
HEXAGONAL PN25**
جلبة بسن خارجي

SIZE (mm)

25 x 3/4"

32 x 1"

40 x 1 1/4"

50 x 1 1/2"

63 x 2"

75 x 2 1/2"

90 x 3"

110 x 4"



FEMALE ADAPTER HEXAGONAL PN25
جلبة بسن خارجي (سداسي)

SIZE (mm)

32 x 1"

40 x 1 1/4"

20 x 1 1/2"

63 x 2"

75 x 2 1/2"

90 x 3"

110 x 4"



ELBOW 90° HEX. FEMALE THREADED PN25
جلبة بسن داخلي (سداسي)

SIZE (mm)

32 x 1"



**TEE 90° HEX. FEMALE
THREADED PN25**
قسام بسن داخلي (سداسي)

SIZE (mm)

32 x 1"



**DOUBLE FEMALE ELBOW 90° W/ TAPE
CONNECTOR PN25**
كوعين زاوية ٩٠ مع جسر توصيل

SIZE (mm)

25 x 1/2"



PPR UNION PN25
شد وصل

SIZE (mm)

20 - 20

25 - 25

32 - 32

40 - 40

50 - 50

63 - 63



**PPR UNION FEMALE
THREADED PN25**
شد وصل بسن داخلي

SIZE (mm)

20 x 1/2"

25 x 3/4"

32 x 1"

40 x 1 1/4"

50 x 1 1/2"

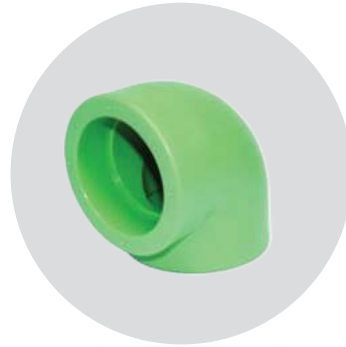
63 x 2"



**PPR UNION MALE
THREADED PN25**
شد وصل بسن خارجي

SIZE (mm)

20 x 1/2"
25 x 3/4"
32 x 1"
40 x 1 1/4"
50 x 1 1/2"
63 x 2"



ELBOW 90° PN25
كوع ٩٠

SIZE (mm)

20
25
32
40
50
63
75
90
110
125



ELBOW 45° PN25
كوع ٤٥

SIZE (mm)

20
25
32
40
50
63
75
90
110
125



TEE 90° PN25
قسام

SIZE (mm)

20
25
32
40
50
63
75
90
110
125



COUPLING PN25
جلبة

SIZE (mm)

20
25
32
40
50
63
75
90
110
125
160



END CAP PN25
غطاء نهاية ماسورة

SIZE (mm)

20
25
32
40
50
63
75
90
110



PLASTIC UNION PN25
شد وصل بلاستيك

SIZE (mm)

20
25
32
40
50
63



TEE 90° REDUCER PN25
قسام نقاص

SIZE (mm)

25 x 20 x 25
32 x 20 x 32
32 x 25 x 32
40 x 20 x 40
40 x 25 x 40
40 x 32 x 40
50 x 20 x 50
50 x 25 x 50
50 x 32 x 50
50 x 40 x 50
63 x 20 x 63
63 x 25 x 63
63 x 32 x 63

63 x 40 x 63
63 x 50 x 63
75 x 20 x 75
75 x 25 x 75
75 x 32 x 75
75 x 40 x 75
75 x 50 x 75
75 x 63 x 75
90 x 50 x 90
90 x 63 x 90
90 x 75 x 90
110 x 63 x 110
110 x 75 x 110
110 x 90 x 110
160 x 90



REDUCER PN25
نقاص

SIZE (mm)

25 x 20	63 x 50
32 x 20	75 x 32
32 x 25	75 x 40
40 x 20	75 x 50
40 x 25	75 x 63
40 x 32	90 x 32
50 x 20	90 x 40
50 x 25	90 x 50
50 x 32	90 x 63
50 x 40	90 x 75
63 x 25	110 x 50
63 x 32	110 x 63
63 x 40	110 x 75
	110 x 90
	160x90



STOP VALVE HANDLE
يد محبس خارجي

SIZE (mm)

20
25
32



STOP VALVE "SURFACE ASSEMBLY" PN25
محبس بسن داخلي

SIZE (mm)

20
25
32



SLANTING VALVE
محبس مائل

SIZE (mm)

25
32
40



CONCEAL VALVE
محبس داخلي مع قاعدة

SIZE (mm)

20
25
32



CONCEAL VALVE HANDLE
يد محبس داخلي

SIZE (mm)

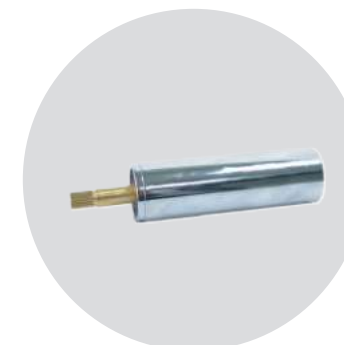
20
25
32



CONCEAL VALVE LOWER PART PN25
قاعدة محبس خارجية

SIZE (mm)

20
25
32



CONCEAL VALVE EXTENSION
توصيلة محبس

SIZE (mm)

109



SIZE (mm)

20
25
32
40
50
63
75
90
110

DOUBLE UNION BALL VALVE PN25
محبس مزدوج الأطراف خارجي



SIZE (mm)

32 X 1"

FEMALE UNION BALL VALVE PN25
محبس مزدوج الأطراف داخلي



SIZE (mm)

20
25
32

COMPACT VALVE PN25
محبس مدمج



SIZE (mm)

20
25
32

BRIDGE BEND PN25
وصلة انبوب جسر منحنى



SIZE (mm)

1/2"
3/4"
1"

TEST PLUG
سدة اختبار



SIZE (mm)

20
25
32

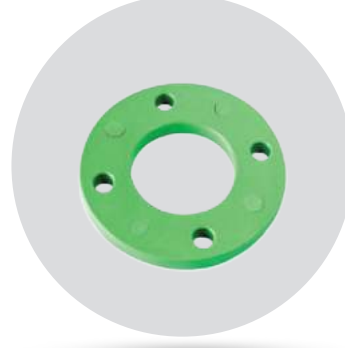
PIPE CLIP
مشبك مواسير



SIZE (mm)

63 x 32
90 x 32

SADDLE CONNECTOR PN25
بريزة



SIZE (mm)

63
75
90
110

STEEL FLANGE PN25
فلانج أدبتر



SIZE (mm)

63
75
90
110

**FLANGE ADAPTER WITH
O-RING PN25**
فلانج أدبتر



SIZE

90mmX1"

WAYS

4

MANIFOLD WITH TEE 90°
بطارية



SIZE

90mmX1"

MANIFOLD WITHOUT TEE
بطارية



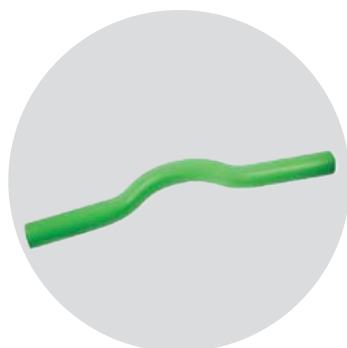
SIZE (mm)

90 x 1"

63 x 1"

50 x 3/4"

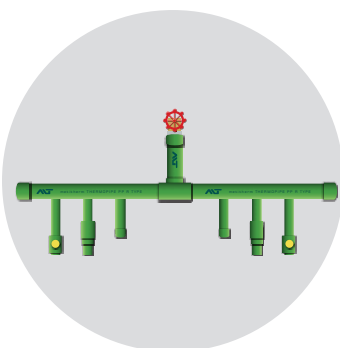
2 WAY MANIFOLD WITHOUT TEE
بطارية



SIZE (mm)

20
25
32

CROSSOVER PN20
كوع جمل



WAYS

10

9(63x32mm)

9 super
(63x32mm)

8

PP-R MAIN CONNECTOR
بطارية PP-R



SIZE (mm)

20
25
32
40
50
63

CROSS TEE
قسامم تقاطع



SIZE (mm)

20
25
32
40
50
63
75
90
110

MATRICES
لقمة لحام



UPVC HIGH PRESSURE FITTINGS



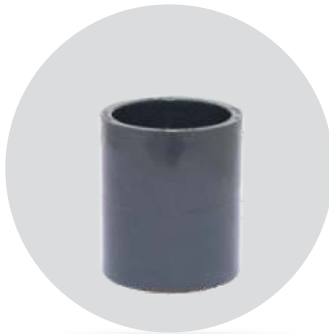
SIZE	
16	110
20	125
25	140
32	160
40	200
50	225
63	250
75	280
90	315
	355
	400

Elbow 90° كوع زاوية ٩٠°



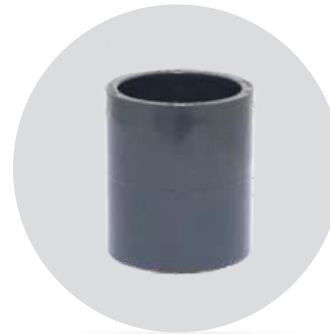
SIZE	
16	110
20	125
25	140
32	160
40	200
50	225
63	250
75	280
90	315
	355
	400

Elbow 45° كوع زاوية ٤٥°



SIZE	
16	125
20	140
25	160
32	200
40	225
50	250
63	280
75	315
90	355
110	400

Socket جلبة



SIZE	
20 x 1/2	
25 x 3/4	
32 x 1	
40 x 1 1/4	
50 x 1 1/2	
63 x 2	
75 x 2 1/2	
90 x 3	
110 x 4	
160 x 6	

Double Socket Adaptor Plain mm/inch
جلبة نقاص



SIZE	
16	50
20	63
25	75
32	90
40	110

Union with O-Ring
شدة وصل



SIZE	
16	
20	
25	
32	
40	
50	
63	
75	
90	
110	

Union Bush
شدة بسن



SIZE	
16	
20	
25	
32	
40	
50	
63	
75	
90	
110	

Union End
شدة بسدة



SIZE	
225x160	
125x75	225x200
125x90	250x160
125x110	250x200
140x90	250x225
140x110	280x225
140x125	280x250
160x90	315x200
160x110	315x225
160x125	315x250
160x140	315x280
200x160	

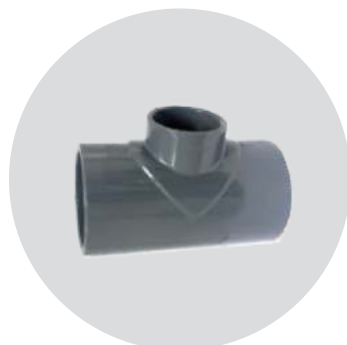
Reducing Bush
نقاص



Reducing Bush
نقاص

SIZE

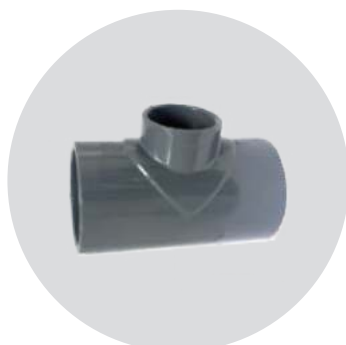
25x20	63x40
32x20	63x50
32x25	75x32
40x20	75x40
40x25	75x50
40x32	75x63
50x20	90x50
50x25	90x63
50x32	90x75
50x40	110x63
63x25	110x75
63x32	110x90



Tee Reducer
قسام نقاص

SIZE

25x20	63x40
32x20	63x50
32x25	75x32
40x20	75x40
40x25	75x50
40x32	75x63
50x20	90x40
50x25	90x50
50x32	90x63
50x40	90x75
63x20	110x50
63x25	110x63
63x32	110x75



Tee Reducer
قسام نقاص

SIZE

110x90	200x90
125x63	200x110
125x75	200x160
125x90	225x110
125x110	225x160
140x75	250x110
140x90	250x160
140x110	250x200
140x125	280x160
160x90	280x225
160x110	315x160
160x125	315x200
160x140	315x225
	315x250



Adaptor with male threaded
جلبة ذكر

SIZE

20/25 x 1/2"
20/32 x 3/4"
32/40 x 1"
40/50 x 1 1/4"
50/63 x 1 1/2"
63/75 x 2"
75/90 x 2 1/2"
90 x 110 x 3"
110/125 x 4"
160/180 x 6"



Adaptor with female threaded
جلبة بسن داخلي

SIZE

20 x 1/2"
25 x 3/4"
32 x 1"
40 x 1 1/4"
50 x 1 1/2"
63 x 2"
75 x 2 1/2"
90 x 3"
110 x 4"



Stub
قطعة داخلية للفلنج

SIZE

25
32
40
50
63
75
90
110
125
140
160
200
225
250
280
315
355
400
450



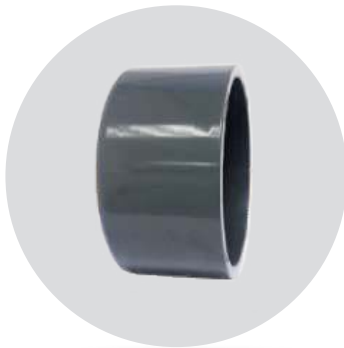
Loose Flange
فلنج

SIZE	
25	140
32	160
40	200
50	225
63	250
75	280
90	315
110	355
125	400
	450



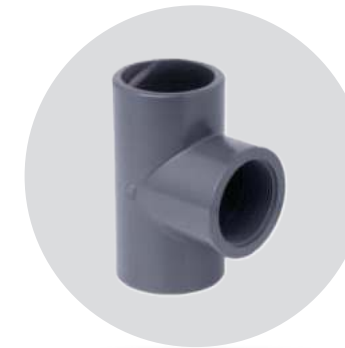
Tee 90°
قسام

SIZE	
16	125
20	140
25	160
32	200
40	225
50	250
63	280
75	315
90	355
110	400



Cap سدة

SIZE
16
20
25
32
40
50
63
75
90
110
125
140
160
200
225



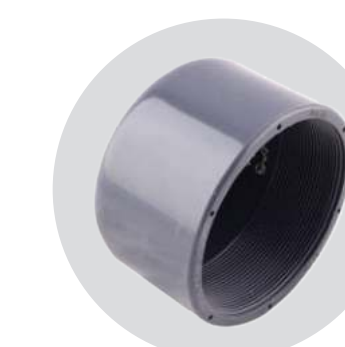
Tee 90° Female Threaded
قسام بسن داخلي

SIZE
20mm X 1/2"
25mm X 3/4"
75mm X 2 1/2"
90mm X 3"
110mm X 4"



Elbow 90° Female Threaded
كوع بسن داخلي

SIZE
20mm X 1/2"
25mm X 3/4"
32mm X 1"
40mm X 1 1/4"
50mm X 1 1/2"
63mm X 2"
75mm X 2 1/2"
90mm X 3"
110mm X 4"
160mm X 6"



Cap Female Threaded
سدة بسن داخلي

SIZE (in)
1/2"
1"
3/4"
1 1/2"
2"
2 1/2"
3"
1"
4"
6"



Double Union Ball valve with Female Threaded
محبس بشدة وصل بسن داخلي

SIZE
3/8"
1/2"
3/4"
1"
1 1/4"
1 1/2"
2"
2 1/2"
3"
4"



Double Union Ball valve with Female Socket
محبس بشدة وصل بسن داخلي

SIZE
16
20
25
32
40
50
63
75
90
110



SIZE

16
20
25
32
40
50
63
75
90
110

Check Ball Valve with Female Socket
رداد بسن داخلي



SIZE

3/8"
1/2"
3/4"
1"
1 1/4"
1 1/2"
2"
2 1/2"
3"
4"

Check Ball Valve with female Threaded
رداد بسن داخلي



SIZE

63
75
90
110
160
200
225
250
315

Tee 90° R/J ٩٠° ناقص



SIZE

63
75
90
110
160
200
225
250
315

Elbow 90° R/J
كوع زاوية ضغط عالي ربر داخلي



SIZE

200x90
90x63
200x110
90x75
200x160
110x63
225x110
110x75
225x160
110x90
250x110
160x63
250x160
160x75
250x200
160x90
315x110
160x110
315x160
200x63
315x200
200x75

Tee Reducer 90° R/J
نقاس ناقص ٩٠°



SIZE

225x200
90x63
250x110
110x90
250x160
160x110
250x200
200x110
250x225
200x160
315x160
225x110
315x200
225x160
315x250

Reducing Socket R/J
جلبة ناقص ضغط عالي ربر داخلي



SIZE (mm)

40
50
63
75
110
160

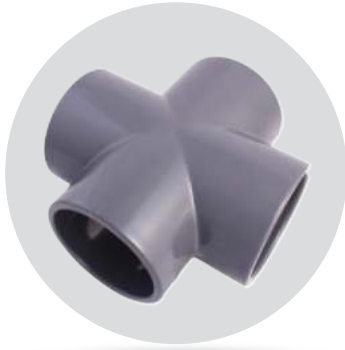
Wye واي



SIZE

63
90
110
160
200
225
250
315

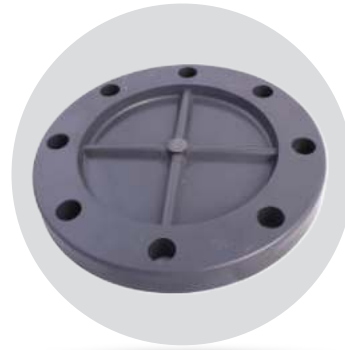
Elbow 45° R/J
كوع فاتح ضغط عالي ربر داخلي



SIZE (mm)

32
40
50
63
75
90
110

Cross Tee
كوع فاتح ضغط عالي ربر داخلي



SIZE (mm)

32 125
40 140
50 160
63 200
75 225
90 250
110 280
110 315

Blind Flange
كوع فاتح ضغط عالي ربر داخلي



SIZE (in)

3/8"
1/2"
3/4"
1"
1 1/4"
1 1/2"
2"
2 1/2"
3"
4"

Nipple نبل



SIZE (in)

3/8"
1/2"
3/4"
1"
1 1/4"
1 1/2"
2"
2 1/2"
3"
4"

Cap Male Threaded
سدة بسن خارجي



SIZE

32
40
50
63
75
90
110
160

UPVC Long Radius Bend 90°
كوع كهرياء ١٦ بار طويل ٩٠°



SIZE

20
25
32
40
50
63
75
90
110

UPVC Long Radius Bend 90°
كوع كهرياء ١٦ بار طويل ٩٠°



SIZE

160

UPVC Long Radius Bend 45°
كوع كهرياء ١٦ بار طويل ٤٥°



Size(mm)

50 160
63 200
63 200
75 200
75 225
75 225
90 225
90 225
90 250
110 250
110 280
110 315
160 630
160 800

Repair Coupling
جلبة اصلاح



meti

**DIN EN 1401-1 DRAINAGE AND SEWERAGE
UPVC FITTINGS
RAL8023**



Elbow 87° 30' R/J - M/F
كوع زاوية 87° 30'

SIZE (mm)

50
75
110
160
200
250
315
400
500
630



Elbow 45° R/J - M/F
كوع زاوية 45°

SIZE (mm)

50
75
110
160
200
250
315
400
500
630



Tee 87° 30' R/J - M/F/F
قسام

SIZE (mm)

50
75
110
160
200
250
315
400
500
630



Register Coupling R/J - F/F
جلبة

SIZE (mm)

50
75
110
160
200
250
315
400
500
630



Repair Coupling R/J - F/F
جلبة اصلاح

SIZE (mm)

50
75
110
160
200



Wye 45° R/J - M/F/F
واي 45°

SIZE (mm)

50
75
110
160
200
250
315
400
500



Tee Reducer 87° 30' R/J - M/F/F
قسام نقاص 87° 30'

SIZE (mm)

75x50	315x110
110x50	315x160
110x75	315x200
160x110	315x250
200x110	400x110
200x160	400x160
250x110	400x200
250x160	400x250
250x200	400x315



Wyee Reducer 45° R/J - M/F/F
واي ناقص 45°

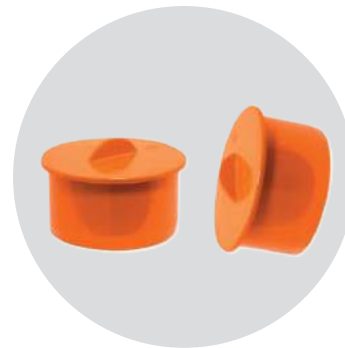
SIZE (mm)	
75x50	315x110
110x50	315x160
110x75	315x200
160x110	315x250
200x110	400x110
200x160	400x160
250x110	400x200
250x160	400x250
250x200	400x315



Reducer R/J - M/F
نقاص

SIZE (mm)

75x50
110x50
110x75
160x110
200x110
200x160
250x200
250x200
315x160
315x200
315x250
400x315



End Plug - M
سدة

SIZE (mm)

40
50
63
75
90
110
160
200
250
315
400



Acces Cap SC/J - F
سدة

SIZE (mm)

110
160
200
250
315



Non Return Valve R/J - M/F
رداد صرف

SIZE (mm)

110
160
200
250
315
160



Floor Gully SC/J - F
غرفة تفتيش

SIZE (mm)

110x75x50x50x50



Roof Vent SC/J - F
هواية

SIZE (mm)

50
110



meti

**DIN EN 1401-1 DRAINAGE AND SEWERAGE
UPVC FITTINGS**

RAL7001

DRAINAGE AND SEWERAGE UPVC FITTINGS



Elbow 87° 30' SC/J - F/F
كوع 87° 30'

SIZE (mm)

32
40
50
63
75
90
110
125
160
200
250
315
400



Elbow 87° 30' SC/J - M/F
كوع 87° 30'

SIZE (mm)

32
40
50
63
75
90
110
160
200
250
315
400



Elbow 45° SC/J - M/F
كوع 45°

SIZE (mm)

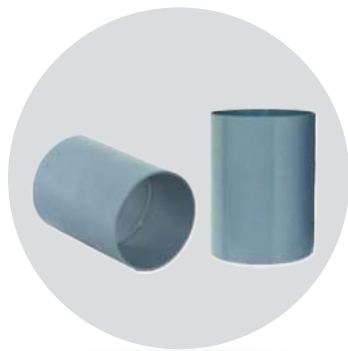
32
40
50
63
75
90
110
160
200
250
315
400



Elbow 45° SC/J - F/F
كوع 45°

SIZE (mm)

32
40
50
63
75
90
110
160
200
250
315
400



Coupling SC/J - F/F
جلبة

SIZE (mm)

32
40
50
63
75
90
110
160
200
250
315



Reducer SC/J - M/F
نقاص

SIZE (mm)

110x75
110x90
160x110
200x110
200x160
250x110
250x160
250x200
315x160
315x200
315x250



Tee 87° 30' SC/J - F/F/F
قسام 87° 30'

SIZE (mm)

32
40
50
63
75
90
110
200
250
315



Tee 87° 30' SC/J - M/F/F
قسام نقاص 87° 30'

SIZE (mm)

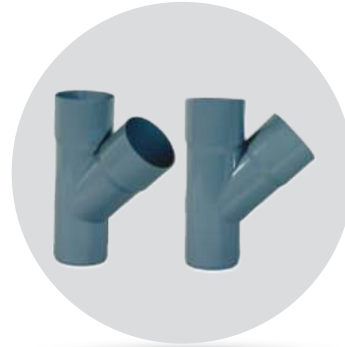
32
50
63
75
90
110
160
200
250
315



Wyee 45° SC/J - F/F/F
45° واي

SIZE (mm)

32
40
50
63
75
90
110
125
160
200
250
315



Wyee 45° SC/J - F/F/M
45° واي

SIZE (mm)

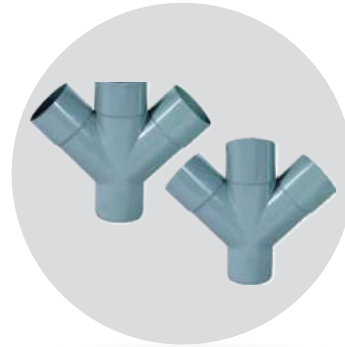
32
40
50
63
75
90
110
125
160
200
250
315



Wyee Reducer 45° SC/J - M/F/F
45° قسم واي

SIZE (mm)

110x40
110x50
110x75
125x110
160x110
160x125
200x110
200x125
200x160
250x160



Double Wyee 45° SC/J - M/F/F/F
دبل واي

SIZE (mm)

32
40
50
63
75
90
110
160



Cross Tee SC/J - M/F/F/F
قسم صليب

SIZE (mm)

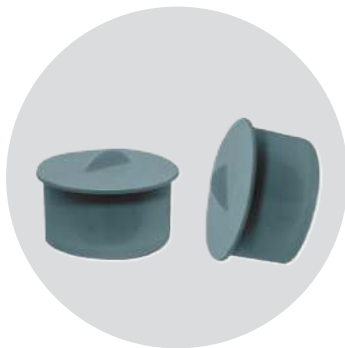
50
63
75
90
110



Access Cap SC/J - F
سدة

SIZE (mm)

110
160
200
250
315



End Plug SC/J - M
سدة

SIZE (mm)

40
50
63
75
90
110
160
200
250
315
400



Roof Vent SC/J - F
هواية

SIZE (mm)

50
110



Gully

SC/J - F/F/F/F/F

SIZE (mm)

250 X 160 X 160 X 110 X110

Cover

SC/J - F

SIZE (mm)

325 X325 X22

Floor Gully with Cover

غرفة تفتيش مع غطاء



SIZE (mm)

130x500

Grill Base

مجري سيل

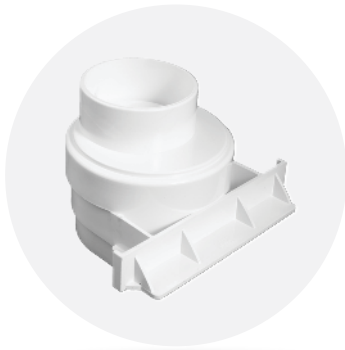


SIZE (mm)

130x500

Grill Cover

غطاء مجري سيل

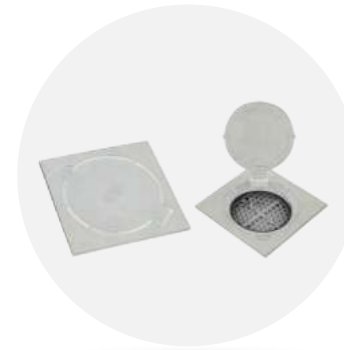


SIZE (mm)

80x100x131

Grill End Cap

سدة مجري سيل



SIZE (mm)

150x150x30

200x200x30

Floor Drain S/C

صفاية



SIZE(mm)

200x200

300x400

400x400

550x550

Well Box

غرفة تفتيش



DWV FITTINGS



P - TRAP
كوع ريحة

SIZE (in)

2"
3"
4"
4.3"



TEE w/ Door 87° 30' - F/F/F
نقاص

SIZE (in)

2"
3"
4"



ELBOW w/ Door 87° 30' - F/F
كوع زاوية 87° 30'

SIZE (in)

2"
3"
4"



ELBOW 90° Female Threaded
كوع بسن داخلي

SIZE (in)

1/2"
3/4"
1"
1 1/4"
1 1/2"
2"



FEMALE ADAPTER - F
جلبة بسن داخلي

SIZE (in)

1/2"
3/4"
1"
1 1/4"
1 1/2"
2"



MALE ADAPTER - F
جلبة بسن خارجي

SIZE (in)

1/2"
3/4"
1"
1 1/4"
1 1/2"
2"



TEE-Y 87° 30' F/F/F
نقاص واي

SIZE (in)

2"
3"
4"
6"



UNION
شد وصل

SIZE (in)

1/2"
3/4"
1"
1 1/4"
1 1/2"
2"



END CAP - F
سدة

SIZE (in)

1/2"
3/4"
1"
1 1/4"
1 1/2"
2"
3"
4"
6"
8"



ELBOW 45° F/F
كوع 45°

SIZE (in)

1/2"
3/4"
1"
1 1/4"
1 1/2"
2"
3"
4"
6"
8"



TEE 87° 30' - F/F/F
قسام 87° 30'

SIZE (in)

1/2"
3/4"
1"
1 1/4"
1 1/2"
2"
3"
4"
6"
8"



ELBOW 87° 30' F/F
كوع 87° 30'

SIZE (in)

1/2"
3/4"
1"
1 1/4"
1 1/2"
2"
3"
4"
6"
8"



WYEE REDUCER - 87° 30' F/F/F
نقاص واي

SIZE (in)

2x1"
2x1 1/2"
3x2"
4x2"
4x3"
6x4"



FLOOR DRAIN
صفاية

SIZE (in)

150x150x30
200x200x30



FLOOR TRAP
غرفة تفتيش

SIZE (in)

110x75x50x50x50
110x2-1/2x1-1/2x1-1/2
110x75x11 1/2"X 11 1/2"



ROOF VENT
هواية

SIZE (in)

4"

50 mm

110 mm



REDUCER BUSH M/F
نقاص

SIZE (in)

3/4 x 1/2"

1 x 1/2"

1 x 3/4"

1 1/4 x 1/2"

1 1/4 x 3/4"

1 1/4 x 1"

1 1/2 x 1/2"

1 1/2 x 3/4"

1 1/2 x 1"

1 1/2 x 1 1/4"

2 x 1/2"

2 x 3/4"

2 x 1"

2 x 1 1/4"

2 x 1 1/2"

3 x 1/2"

3 x 3/4"

3 x 1"

3 x 1 1/4"

3 x 1 1/2"

3 x 2"

4 x 1"

4 x 1 1/4"

4 x 1 1/2"

4 x 2"

4 x 3"

6 x 3"

6 x 4"



**TEE REDUCER
87°30' - F/F/F**
قسام نقاص

SIZE (in)

3/4 x 1/2"

1 x 1/2"

1 x 3/4"

1 1/4 x 1/2"

1 1/4 x 3/4"

1 1/4 x 1"

1 1/2 x 1/2"

1 1/2 x 3/4"

1 1/2 x 1"

1 1/2 x 1 1/4"

2 x 1/2"

2 x 3/4"

2 x 1"

2 x 1 1/4"

2 x 1 1/2"

3 x 1"

3 x 2"

4 x 2"

4 x 3"

6 x 4"



COUPLING - F/F
جلبة

SIZE (in)

1/2"

3/4"

1"

1 1/4"

1 1/2"

2"

3"

4"

6"

8"



HDPE PIPES (PE 80 / 100)

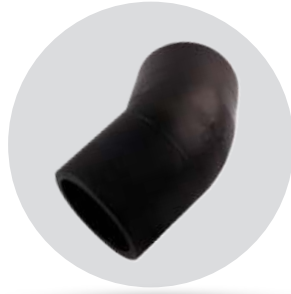
Sizes: 16 mm - 1600 mm



HDPE BUTT WELDING FITTINGS



Elbow 90° PE 100



Elbow 45° PE 100



Tee 45°, Equal PE 100



Tee 90° PE 100



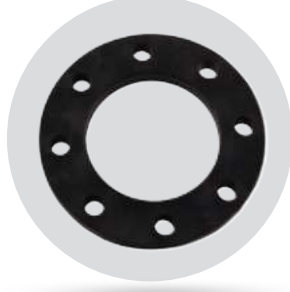
Tee Reducer 90° PE 100



Tee Reducer 90° PE 100



End Cap PE 100



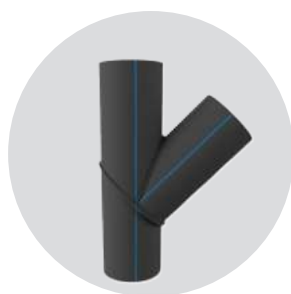
**Backing Flange PP-V for
Butt Fusion Systems
Metric**



**Flange Adaptor LS, PE 100
Combined Jointing Face:
Flat and Serrated**



Segmented Reduced Tee 90°



Segmented Tee 45°



Segmented Bend 90°



Segmented Cross



Segmented Bend 60°



Segmented Bend 45°



Segmented Bend 30°



HDPE ELECTRO-FUSION FITTINGS

HDPE ELECTRO-FUSION FITTINGS



Elbow 90°

Size (mm)	
20	110
25	125
32	160
40	180
50	200
63	225
75	250
90	315



Elbow 45°

Size (mm)	
20	110
25	125
32	160
40	180
50	200
63	225
75	250
90	315



Tee 90°

Size (mm)	
20	110
25	125
32	160
40	180
50	200
63	225
75	250
90	315



Reducer

Size (mm)	Size (mm)
25x20	75x50
32x20	75x63
32x25	90x50
40x20	90x63
40x25	110x63
40x32	110x90
50x25	125x25
50x32	125x90
50x40	125x110
63x32	160x90
63x40	160x110
63x50	160x125
	225x160



Coupler

Size (mm)	Size (mm)
20	180
25	200
32	225
40	250
50	280
63	315
75	355
90	400
110	450
125	500
140	560
160	630



Cap

Size (mm)	110
33	125
20	140
25	160
32	180
40	200
50	225
63	250
75	280
90	315



Tee Reducer 90°

Size (mm)
32x25
50x32
63x32
63x50
160x110
180x125



Female Adaptor

Size (mm)
32x1"
50x1 1/2"



Male Adaptor

Size (mm)
32x3/4"
32x1"
32x1"
50x1 1/2"
63x2"

GRP PIPES



SIZES	
300 mm	1,600 mm
350 mm	1,700 mm
400 mm	1,800 mm
450 mm	1,900 mm
500 mm	2,000 mm
600 mm	2,100 mm
700 mm	2,200 mm
800 mm	2,300 mm
900 mm	2,400 mm
1,000 mm	2,500 mm
1,100 mm	2,600 mm
1,200 mm	2,700 mm
1,300 mm	2,800 mm
1,400 mm	2,900 mm
1,500 mm	3,000 mm

GRP MANHOLES



SIZES	
900 mm	1,800 mm
1,000 mm	2,000 mm
1,200 mm	2,400 mm
1,500 mm	2,500 mm
1,600 mm	3,000 mm

GRP TANKS



SIZES	
1,000 ltr	20,000 ltr
1,500 ltr	25,000 ltr
2,000 ltr	30,000 ltr
3,000 ltr	40,000 ltr
4,000 ltr	45,000 ltr
5,000 ltr	50,000 ltr
6,000 ltr	55,000 ltr
7,000 ltr	60,000 ltr
8,000 ltr	65,000 ltr
9,000 ltr	70,000 ltr
10,000 ltr	75,000 ltr
11,000 ltr	80,000 ltr
12,000 ltr	85,000 ltr
13,000 ltr	90,000 ltr
14,000 ltr	100,000 ltr
15,000 ltr	120,000 ltr

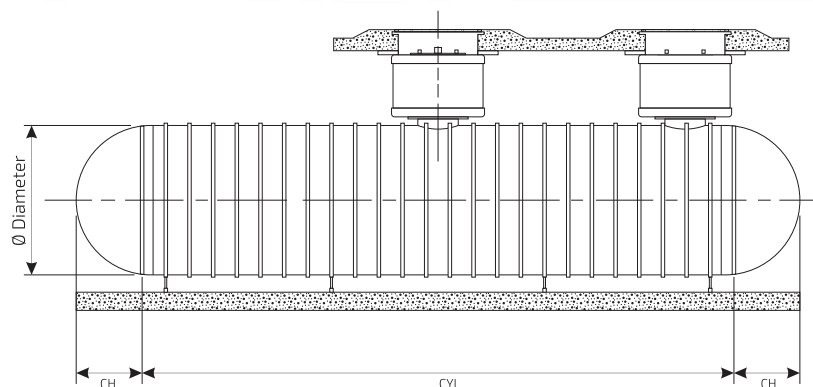
Aboveground Tanks Capacities & Dimensions

Capacity	Diameter	Cylinder Length CYL	End Cap	Dimensions
1,000	1,000	1,200	150	1,000 Ø x 1,500L x 4.0 thk
1,500	1,000	1,540	150	1,000 Ø x 1,840L x 4.2 thk
2,000	1,000	2,500	160	1,000 Ø x 2,800L x 4.3 thk
3,000	1,200	2,500	200	1,200 Ø x 2,900L x 4.4 thk
4,000	1,200	3,356	200	1,200 Ø x 3,756L x 4.5 thk
5,000	1,600	2,309	200	1,600 Ø x 2,709L x 5.5 thk
6,000	2,000	2,806	200	1,600 Ø x 3,704L x 6.0 thk
7,000	2,000	3,304	200	2,000 Ø x 2,909L x 6.0 thk
8,000	2,000	2,209	350	2,000 Ø x 3,227L x 6.0 thk
9,000	2,000	2,527	350	2,000 Ø x 3,545L x 6.5 thk
10,000	2,000	2,845	350	2,000 Ø x 3,864L x 6.5 thk
11,000	2,000	3,164	350	2,000 Ø x 4,182L x 6.5 thk
12,000	2,000	3,842	350	2,000 Ø x 4,182L x 6.5 thk
13,000	2,000	3,800	350	2,000 Ø x 4,500L x 6.0 thk
14,000	2,000	4,119	350	2,000 Ø x 4,819L x 6.5 thk
15,000	2,400	2,982	350	2,400 Ø x 3,682L x 7.0 thk
20,000	2,400	4,088	350	2,400 Ø x 4,788L x 7.5 thk
25,000	2,400	5,193	350	2,400 Ø x 5,893L x 7.5 thk
30,000	2,400	6,298	350	2,400 Ø x 6,998L x 8.0 thk
40,000	3,000	5,276	400	3,000 Ø x 6,076L x 8.5 thk
45,000	3,000	5,983	400	3,000 Ø x 5,983L x 8.5 thk
50,000	3,000	6,691	400	3,000 Ø x 7,491L x 9.0 thk
55,000	3,000	7,398	400	3,000 Ø x 8,198L x 9.0 thk
60,000	3,000	8,105	400	3,000 Ø x 8,905L x 10.0 thk
65,000	3,000	8,813	400	3,000 Ø x 9,613L x 10.5 thk
70,000	3,000	9,520	400	3,000 Ø x 10,320L x 10.5 thk
75,000	3,000	10,227	400	3,000 Ø x 11,027L x 10.5 thk
80,000	3,000	10,935	400	3,000 Ø x 11,735L x 10.5 thk
85,000	3,000	11,642	400	3,000 Ø x 12,442L x 11.5 thk
90,000	3,000	12,349	400	3,000 Ø x 13,149L x 12.0 thk
100,000	3,000	13,734	400	3,000 Ø x 14,564L x 12.0 thk
120,000	3,000	16,594	400	3,000 Ø x 17,394L x 12.0 thk

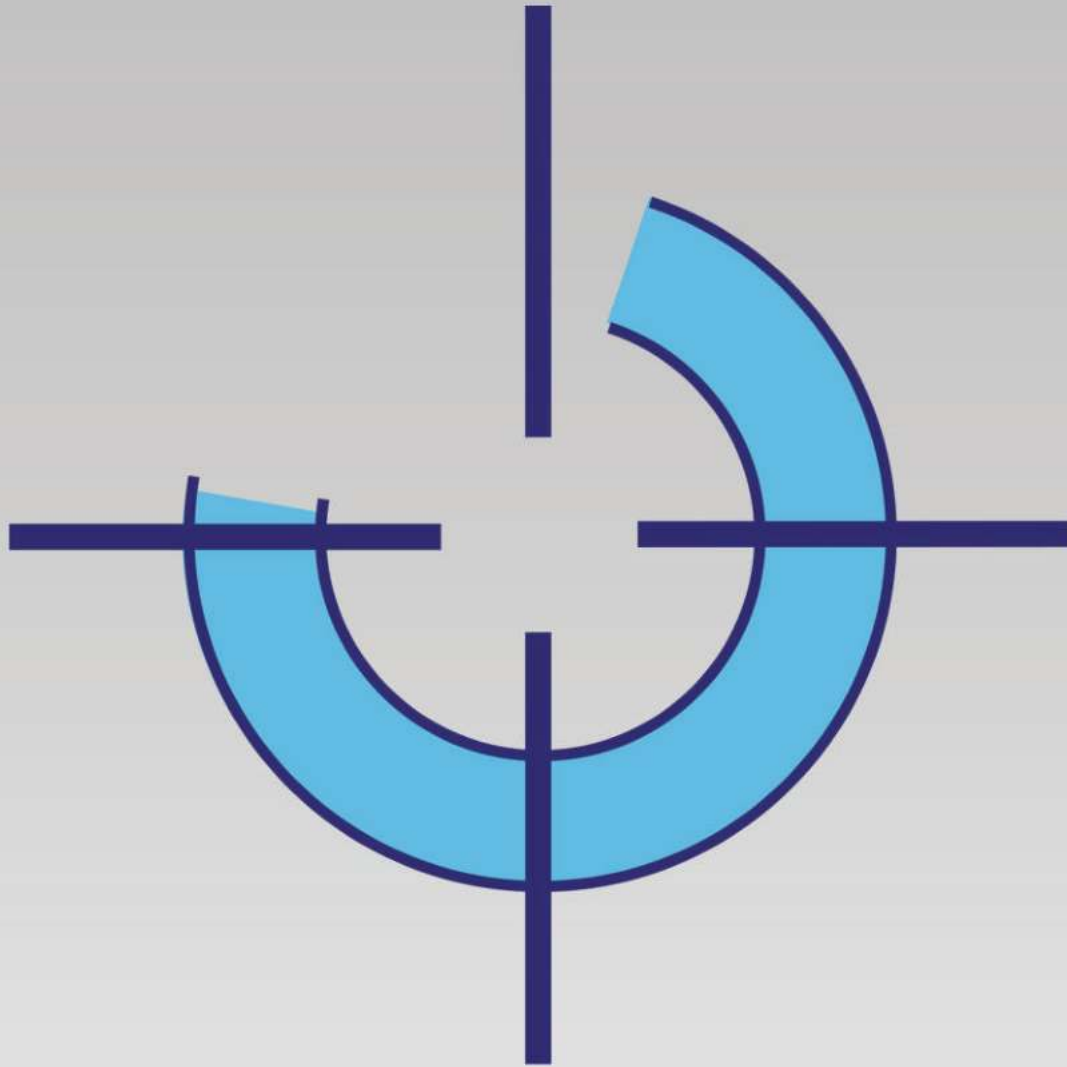


Underground Tanks Capacities & dimensions

Capacity	Diameter	Cylinder Length CYL	End Cap	Dimensions
4,000	1,600	1,812	800	1,600 Ø x 2,212L x 4.0 thk
5,000	1,600	2,309	800	1,600 Ø x 2,709L x 5.5 thk
6,000	1,600	2,806	800	1,600 Ø x 3,206L x 5.5 thk
7,000	1,600	3,304	800	1,600 Ø x 3,704L x 6.0 thk
8,000	1,600	3,801	800	1,600 Ø x 4,201L x 6.0 thk
9,000	1,600	4,299	800	1,600 Ø x 4,699L x 6.0 thk
10,000	1,600	4,796	800	1,600 Ø x 5,196L x 6.5 thk
11,000	2,000	2,196	1,000	2,000 Ø x 4,195L x 6.5 thk
12,000	2,000	2,513	1,000	2,000 Ø x 4,513L x 6.5 thk
13,000	2,000	2,831	1,000	2,000 Ø x 4,831L x 6.5 thk
14,000	2,000	3,149	1,000	2,000 Ø x 5,149L x 6.5 thk
15,000	2,400	3,468	1,200	2,000 Ø x 5,468L x 7.0 thk
20,000	2,400	3,216	1,200	2,000 Ø x 5,216L x 7.5 thk
25,000	2,400	4,321	1,200	2,000 Ø x 6,321L x 7.5 thk
30,000	2,400	5,426	1,200	2,000 Ø x 7,426L x 8.0 thk
35,000	2,400	6,532	1,200	2,000 Ø x 8,532L x 8.5 thk
40,000	2,400	7,637	1,200	2,000 Ø x 9,637L x 8.5 thk
45,000	2,400	8,742	1,200	2,000 Ø x 10,742L x 8.5 thk
50,000	3,000	5,644	1,500	3,000 Ø x 8,044L x 9.0 thk
55,000	3,000	6,351	1,500	3,000 Ø x 8,751L x 10.0 thk
60,000	3,000	7,059	1,500	3,000 Ø x 9,459L x 10.0 thk
65,000	3,000	7,766	1,500	3,000 Ø x 10,166L x 10.0 thk
70,000	3,000	8,473	1,500	3,000 Ø x 10,873L x 10.5 thk
75,000	3,000	9,181	1,500	3,000 Ø x 11,591L x 10.5 thk
80,000	3,000	9,888	1,500	3,000 Ø x 12,288L x 11.0 thk
85,000	3,000	10,596	1,500	3,000 Ø x 12,996L x 11.5 thk
90,000	3,000	11,303	1,500	3,000 Ø x 13,703L x 12.0 thk
95,000	3,000	12,010	1,500	3,000 Ø x 14,410L x 12.0 thk
100,000	3,000	12,718	1,500	3,000 Ø x 15,118L x 12.0 thk
120,000	3,000	15,547	1,500	3,000 Ø x 17,947L x 12.0 thk



Production of GRP underground tanks at the plant



المنيف للأنابيب

ALMUNIF PIPES

مناف
MANAF



KINGDOM OF SAUDI ARABIA

Riyadh 11383 K.S.A P.O. Box 355342

Sales & Customer Service: +966 920000357

Fax: +966 112651845



www.ALMUNIFPIPES.com



info@mmppf.com